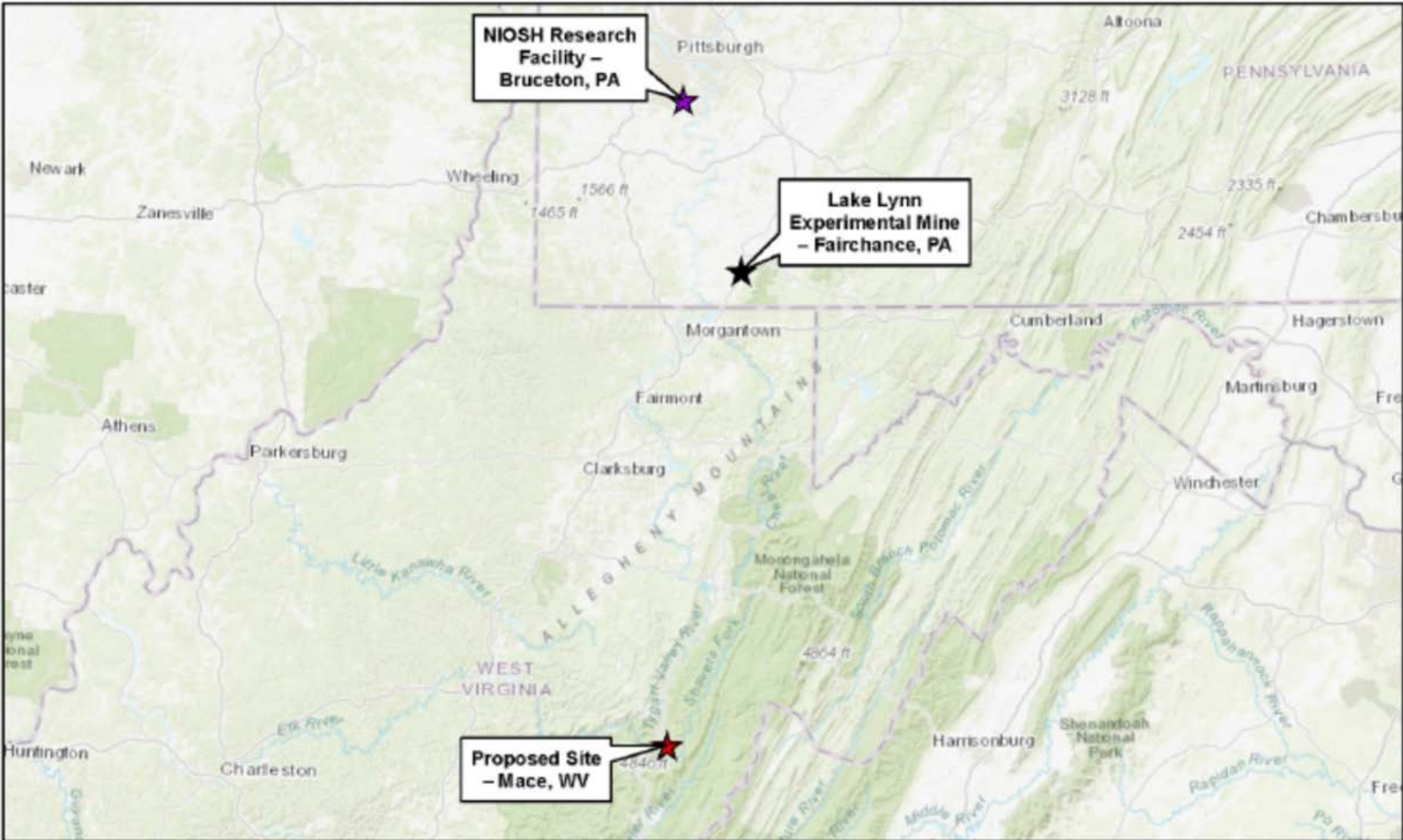








# Underground Test Facilities – Mace facility

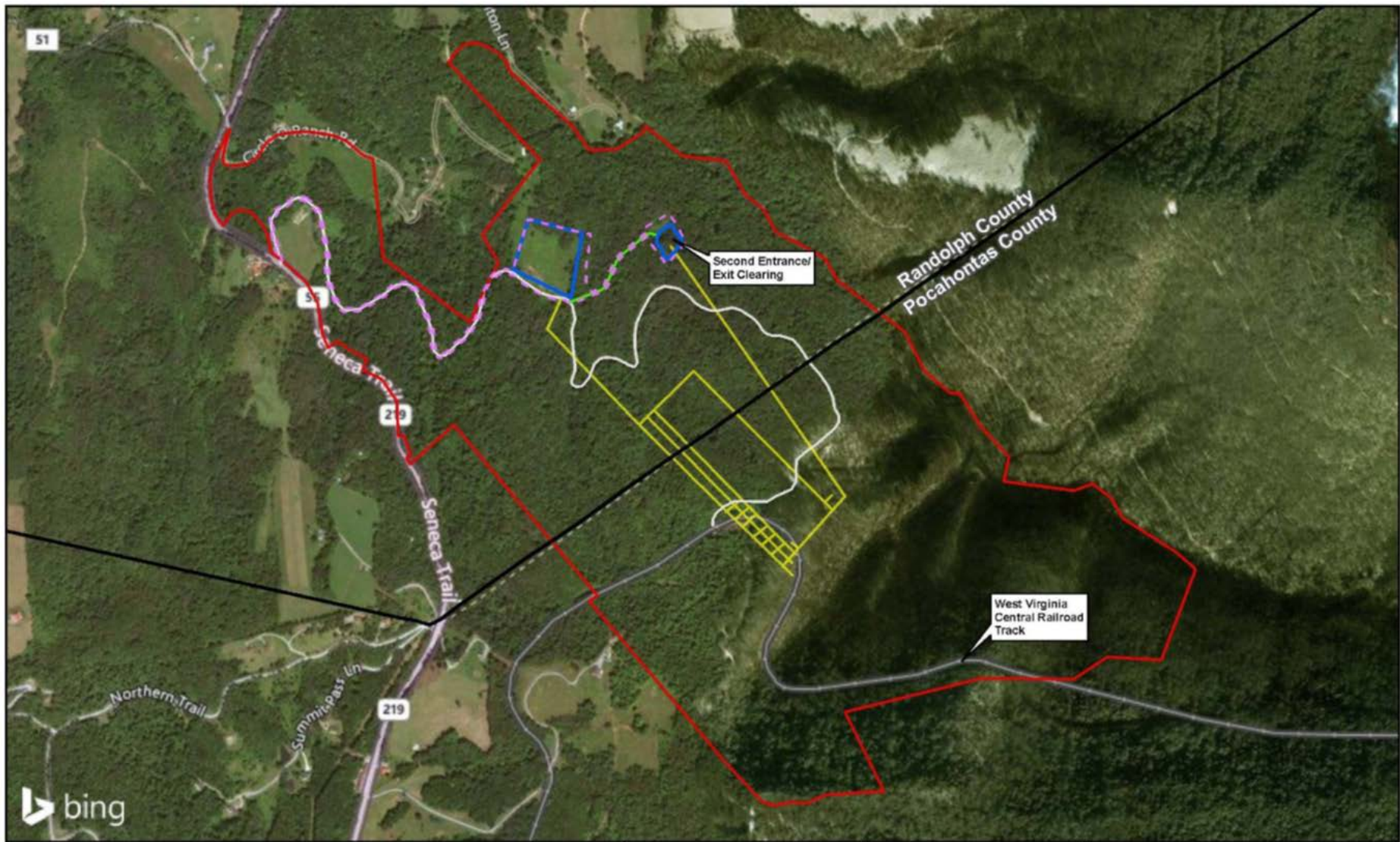
- 3-year effort
- Multiple open houses with local residents
- Property owner did agree to Government's offer
- Government pursuing final purchase
  - Final acceptance of EIS
  - Title search, boundary survey, aquifer assessments





<ul style="list-style-type: none"> <li> Proposed Site – Mace, WV</li> <li> NIOSH Research Facility – Bruceton, PA</li> <li> Lake Lynn Experimental Mine – Fairchance, PA</li> </ul>	<p>Sources: CDC, ESRI, WGIS</p>		<p>Vicinity Map</p>
	<p>Coordinate System: StatePlane WV North FIPS Feet Datum: North American 1983.</p>		 <p>0 6 12 24 Miles </p>





- Existing Access Road
- Proposed Access Road
- Underground Safety Research Facility
- Proposed Fence
- Surface Support Facilities and Parking
- Project Area
- County Boundary

Sources: CDC, ESRI, WGIS

Coordinate System:  
StatePlane WV North FIPS Feet  
Datum: North American 1983



**Proposed Action**

# Developments at the Bruceton Experimental Mine

- Develop 30-m long flame tube
- 2-year development effort with research starting FY23
- Assess dust explosibility and flammability hazards of mixed gases
- Replicate LLEM results on smaller scale
- Establish minimum coal dust concentrations (MEC) and TIC inerting limits.

